

How to Add Remix 3D Items to a Microsoft Word Document

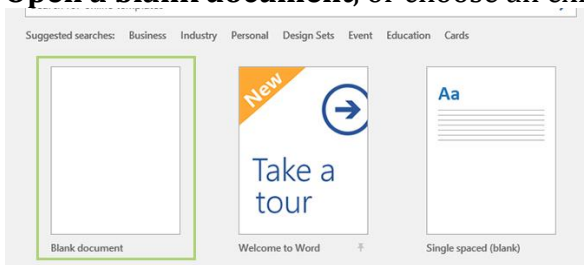
By Bryan Clark | February 4, 2018 | Laptop Magazine

New in Windows' Fall Creators Update is the ability to add 3D artwork to your Microsoft Office documents. The files, lifted straight from Microsoft's own 3D modeling community, Remix 3D, allows anyone with an Office 365 subscription to take advantage of some really cool artwork created by a community of super-talented individuals.

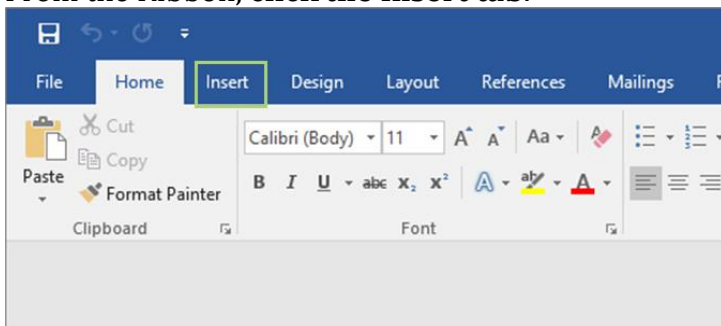


Here's how to drop one in a Word document.

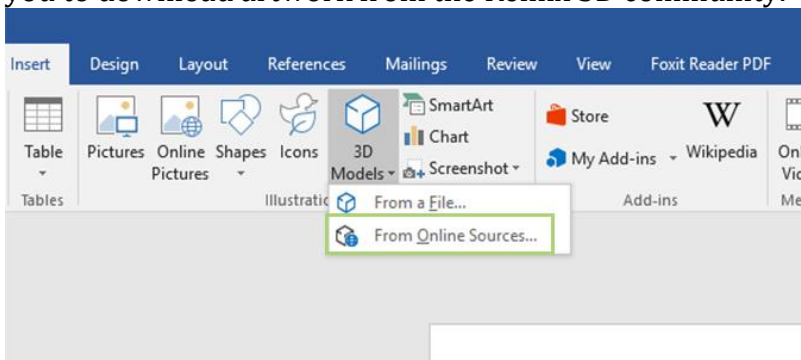
1. Start up Word 2016
2. **Open a blank document**, or choose an existing file that you started work on previously.



3. From the Ribbon, **click the Insert tab**.



4. **Choose 3D Models** and then select a file of your own, or one from Online Sources, which allows you to download artwork from the Remix 3D community.



5. **Choose a category**, or search for one in the search bar at the top.

Online 3D Models

Remix 3D



6. **Pick your artwork and double click** to insert it into the document.

Remix 3D



7. From here, you can **rotate, resize, or flip** the 3D object using the pull handles and/or the rotation wheel.

